

Operation Manual

Beverage Dispenser Model ISOD 12

Item No.: 334-1000



Table of Contents

SCOPE OF DELIVERY	3
STANDARDS AND DIRECTIVES	3
TECHNICAL OVERVIEW	3
SYMBOL EXPLANATIONS	4
GENERAL INSTRUCTIONS	4
SAFETY INSTRUCTIONS.....	4
DEVICE INSTALLATION.....	5
STRUCTURE AND COMPONENTS	5
INITIAL START-UP.....	6
OPERATION.....	6
CLEANING.....	6
MAINTENANCE	6
TAKING BEVERAGE DISPENSER OUT OF OPERATION / STORAGE / TRANSPORT	6
TROUBLESHOOTING	7
EXPLODED VIEW DRAWING.....	7
EXPLODED VIEW DRAWING – Legend.....	8
PACKAGING DISPOSAL	8

Dear Customer,

Congratulations on your new SARO Beverage Dispenser ISOD 12.

The product you have purchased has been designed for commercial use in restaurants, hotels, cafés, canteens, and supermarkets, and is intended for serving larger quantities of beverages.

Please read the operating manual carefully before putting the unit into operation.

We wish you much enjoyment with your new SARO product.

SCOPE OF DELIVERY

- 1 Beverage Dispenser ISOD 12
- Operation Manual

STANDARDS AND DIRECTIVES

Das Gerät entspricht den aktuellen Normen und Verordnungen der EU:

VO (EG) 1935/2004

(VO über Materialien und Gegenstände, die dazu bestimmt sind, mit Lebensmitteln in Berührung zu kommen),

VO (EU) 10/2011

(VO über Materialien und Gegenstände aus Kunststoff, die dazu bestimmt sind, mit Lebensmitteln in Berührung zu kommen),

LFGB § 31

(Deutsches Lebensmittel, Bedarfsgegenstände und Futtermittelgesetzbuch § 31: Übergang von Stoffen auf Lebensmittel)

Bei Bedarf lassen wir Ihnen die entsprechende Konformitätserklärung zukommen.

TECHNICAL OVERVIEW

Beverage Dispenser	
Model	ISOD 12
Item No.	334-1000
Material	Stainless steel housing, lid and base made of plastic
Tap	Yes
Gross capacity	12 Liter
External dimensions	ø 266 x H 382 mm (with unfolded feet and handle: H 526 mm)
Gross weight	2,5 kg
GTIN [EAN-Code]	4017337334001

SYMBOL EXPLANATIONS



WARNUNG!

Dieses Symbol kennzeichnet Gefahren, die zu Verletzungen führen können. Halten Sie die angegebenen Hinweise zur Arbeitssicherheit unbedingt genau ein und verhalten Sie sich in diesen Fällen besonders vorsichtig.

WARNING!

This symbol indicates hazards that may cause injuries. Always follow the specified safety instructions precisely and exercise extra caution in these situations.

GENERAL INSTRUCTIONS

- Keep this operating manual readily accessible near the device.
- The manufacturer/supplier cannot be held liable for any damage resulting from failure to observe this operating manual.
- Failure to comply with this manual may compromise the safety of the device.
- When passing the device on to third parties, this operating manual must be included.
- This device must not be operated by children or persons with reduced physical, sensory, or mental capabilities, as it may lead to burns.
- After unpacking the device, ensure that it is in perfect condition. If you discover any damage, contact your dealer immediately.
- Check whether all components listed in the delivery scope are present. If anything is missing, contact your dealer.
- Keep the packaging of the device. The device can only be safely transported in its original packaging (e.g., for repairs, moving, etc.). Be aware that all packaging materials (plastic bags, cardboard, styrofoam, etc.) can pose a hazard to children and must be kept out of their reach.
- If storing the packaging is not possible, separate the various packaging materials and dispose of them properly at a local recycling facility.
- Do not operate the device unattended.
- Observe all applicable accident prevention regulations and general safety guidelines for the area of use.
- Place the device on a dry, well-ventilated surface that is level and secure.
- Do not drill or puncture the interior or exterior of the device.
- The manufacturer/supplier accepts no liability for damages resulting from failure to comply with the operating instructions. In such cases, the safety of the device is no longer guaranteed.

SAFETY INSTRUCTIONS

- Improper use and incorrect handling may cause malfunctions and injuries.
- Dispose of packaging materials safely to avoid the risk of suffocation.
- Observe the accident prevention regulations and general safety guidelines applicable to the area of use.
- Thoroughly clean the beverage dispenser before first use to remove any production residues.
- Ensure the device stands securely on a dry, sufficiently sturdy, and non-slip surface suitable for its weight.
- Do not expose the device to direct sunlight, place it near heat sources (heater, stove, oven, open flames), or set it on hot surfaces.
- Do not place heavy objects, loads, or liquids on top of the device.
- Do not move the device while it is in use.
- Ensure the device does not tip over during movement, as this could lead to injuries.
- Do not use the dispenser if it is damaged.
- For hygienic reasons, daily cleaning is recommended, and more frequently if necessary throughout the day.
- For storage, fold the legs inward.
- Do not drink directly from the dispensing tap.



DEVICE INSTALLATION

Place the device in a dry and well-ventilated room. Ensure it stands securely on a dry and non-slip surface.

Unfold the feet to provide a stable base.

STRUCTURE AND COMPONENTS



INITIAL START-UP

Before first use:

Unpack the device, check it for completeness, and set it up (see device setup). Clean the device (see cleaning).

OPERATION

- Rinse thoroughly with hot water before use
- Place the unit on a level surface and fold the feet outward until they lock into place
- Fill with the liquid of your choice, up to a maximum of 2 cm below the rim of the container
- Do not fill with warm dairy products or carbonated beverages
- To dispense, either lock the tap in the open position or operate it manually

CLEANING

Wipe the exterior and interior surfaces with a soft, damp cloth.

A mild dish detergent may be used.

Wipe again without detergent and then dry thoroughly.

Do not use harsh, bleaching, corrosive, or abrasive cleaning agents or tools, as they may damage or scratch the surfaces.

For hygienic reasons, cleaning is recommended at least once daily, and additionally if needed during the day.

MAINTENANCE

The beverage dispenser requires very little maintenance. Please follow the instructions under the "Cleaning" section.

TAKING BEVERAGE DISPENSER OUT OF OPERATION / STORAGE / TRANSPORT

Clean the device thoroughly inside and out. Once it is dry and not intended for use for an extended period, store it in a dry, dust-free, and cool place. Ideally, cover the unit or use the original packaging to protect it from damage.

Ensure the device is secured against pets climbing inside and potentially getting trapped.

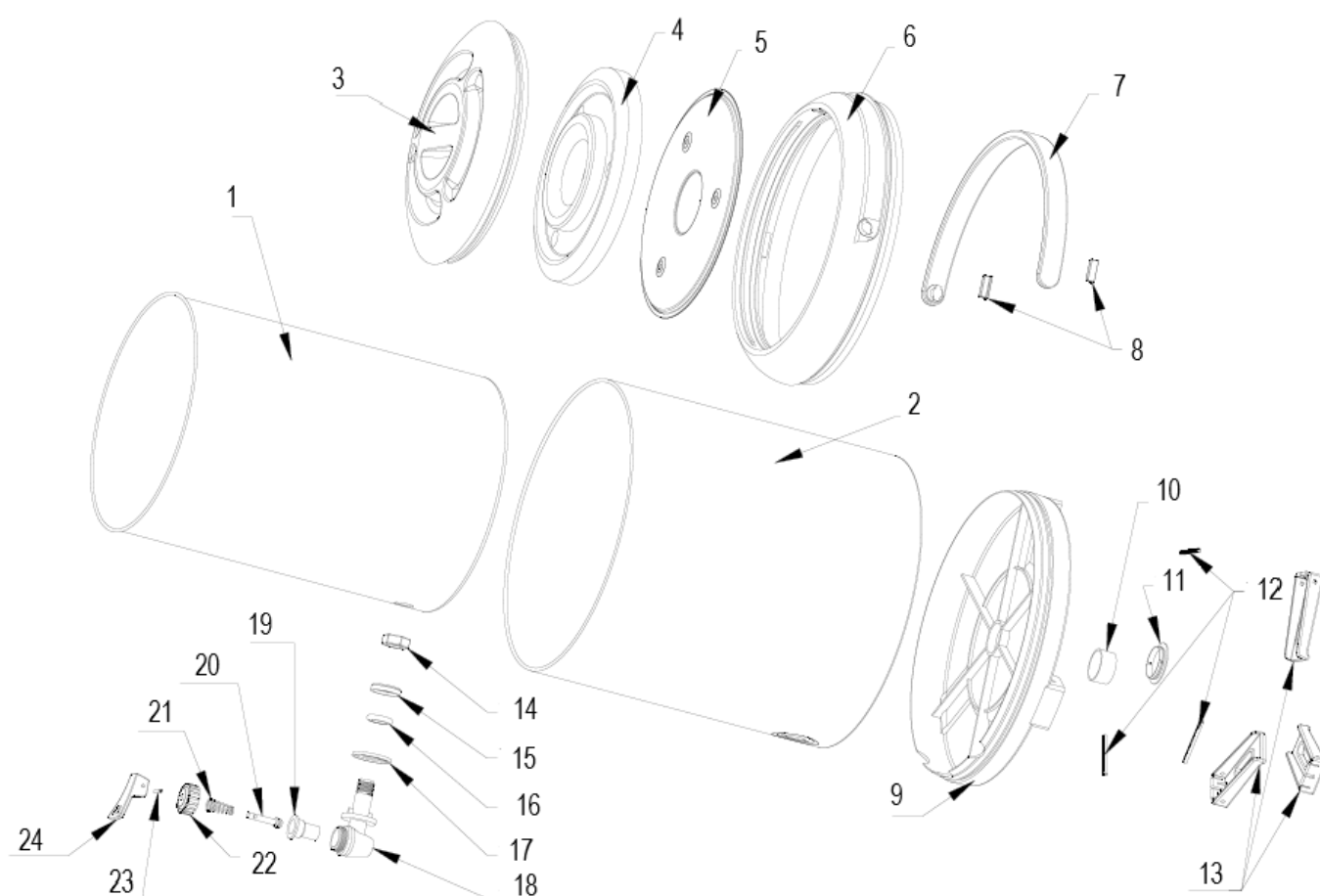
When storing only the packaging material, be aware that components such as plastic bags, cardboard, and styrofoam can pose a danger to children if they play with them unsupervised (e.g. risk of suffocation).

For transporting the device, it is best to use the original packaging to ensure optimal protection against impact, sharp edges, weather conditions, etc. Do not expose the device to moisture or rain.

TROUBLESHOOTING

Problem	Cause and Solution
Does not keep liquid properly warm	Check whether the lid is properly seated and closed.
Only a small amount of liquid comes out of the spout	Check if the spout is clogged and clean it.
If the issues cannot be resolved through basic troubleshooting, please contact your dealer.	

EXPLODED VIEW DRAWING



EXPLODED VIEW DRAWING – Legend

1	Inner body	Gehäuse (innen)
2	Outer body	Gehäuse (außen)
3	Plastic lid	Plastik Deckel
4	Foam inner	Schaumstoff innen
5	Stainless steel pannel	Paneel aus rostfreiem Edelstahl
6	Lid protecting case	Deckelrahmen
7	Handle	Haltebügel
8	Handle fixator (2x)	Fixierung für Haltebügel (2x)
9	Bottom	Boden
10	Seal	Dichtung
11	Gasket	Bodenverschluss
12	Holder fitting	Haltebolzen
13	Holder	Füße
14	Screw	Schraubenmutter
15	Plastic ring	Kunststoffring
16	Silicone fixator	Silikon-O-Ring
17	Silicone fixator	Silikon-O-Ring
18	Water faucet	Zapfhahn
19	Silicone ring	Silikonring
20	Bevel gear	Schaft
21	Spring	Feder
22	Screw	Schraube
23	Faucet fixator	Splint
24	Faucet switch	Hebel

PACKAGING DISPOSAL



Please separate the packaging materials accordingly and take them to the appropriate collection points for recycling and environmental protection.

Made in P.R.C for: