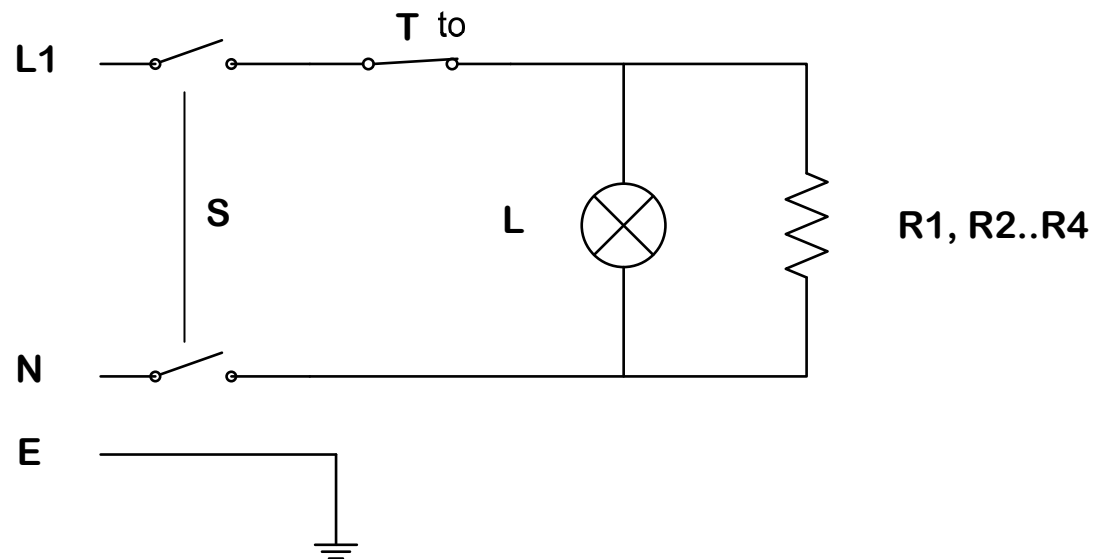


MOD. BR111	400 W - 230V/1/N/T 50/60 Hz.
MOD. BR211	800 W - 230V/1/N/T 50/60 Hz.
MOD. BR311	1200 W - 230V/1/N/T 50/60 Hz.
MOD. BR411	1600 W - 230V/1/N/T 50/60 Hz.

SCHEMA ELETTRICO
WIRING DIAGRAM
STROMLAUFPLAN
SCHEMA ELETRIQUE



T	Termostato di regolazione	Control thermostat	Regulierthermostat	Thermostat de reglage
S	Interruttore	Switch	Schalter	Interrupteur
L	Lampada funzionamento (arancione)	Operation indicator lamp (orange)	Kontrollampe betrieb (orange)	Témoin de fonctionnement (orange)
R	Resistenza 400W - 230V	Resistance 400W - 230V	Widerstand 400W - 230V	Resistance 400W - 230V